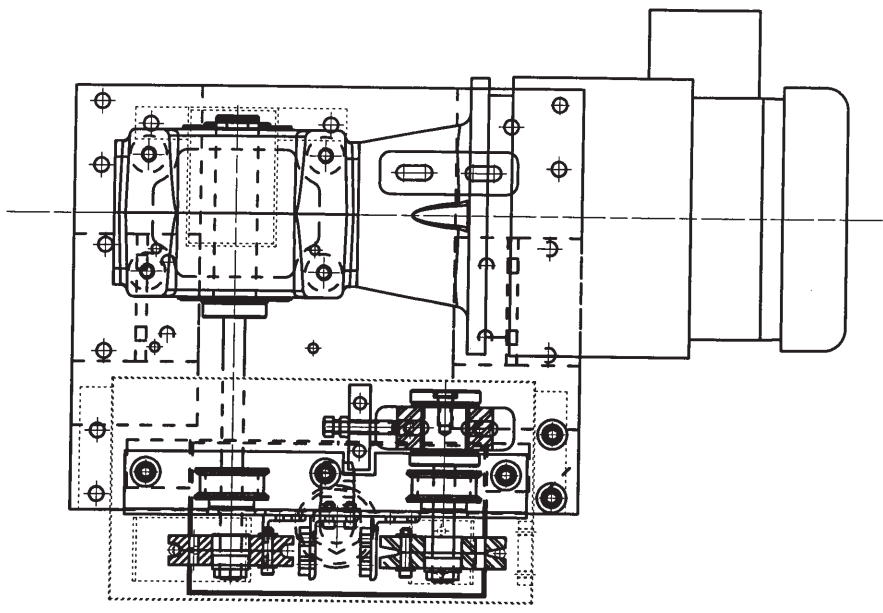


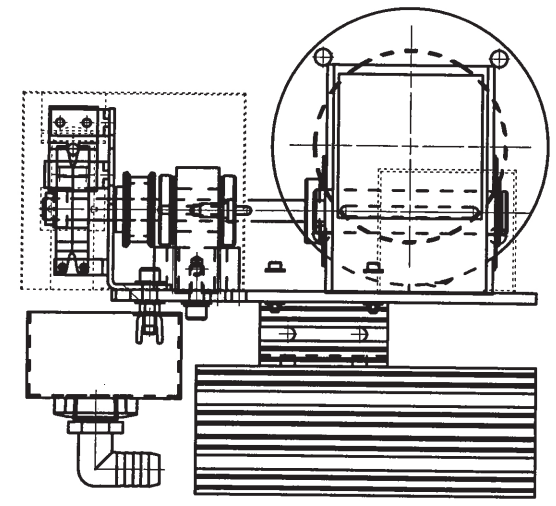
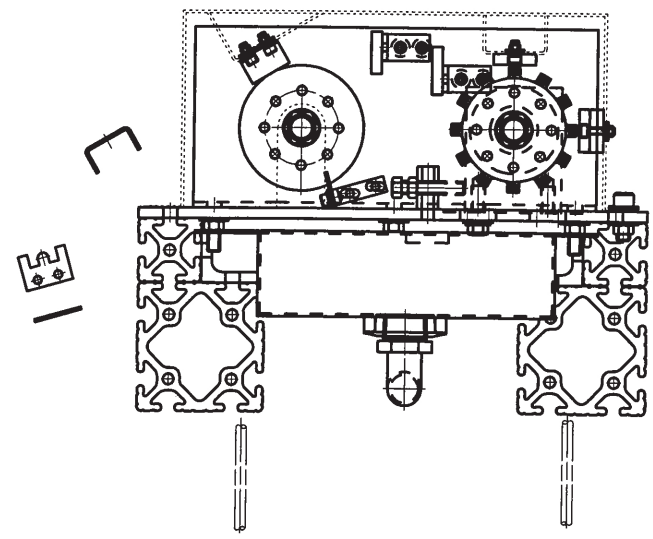
D-XXXX

DO NOT SCALE DRAWING REPORT ALL DIMS TO ONE DEPT
TOLERANCES TWO DECIMALS + .00
THREE DECIMALS + .00

| REVISIONS | | | | |
|-----------|-----|-------------|------|----|
| ZONE | No. | DESCRIPTION | DATE | BY |
| | 1 | | | |



**MODEL AG25 "MINI DAVID" SKIMALL
OIL SKIMMER**



| | | | | |
|---------------------|----|----|--|------------|
| A2529 | 47 | 1 | SPACER BLOCK | CFS 1018 |
| | 46 | 1 | 5/16-18 JAM NUT | STL |
| 90866A030 | 45 | 2 | 5/16-18 WING NUT | STL |
| | 44 | 1 | 5/16-18 X 1.50 LG HEX HEAD BOLT | STL |
| A2530 | 43 | 1 | ADJUSTING BLOCK | CFS 1018 |
| A2527 | 42 | 1 | SHIM SHIM STOCK | |
| | 41 | 1 | 90 DEG. ELBOW BARBED MALE PIPE | NYLON |
| C2528 | 40 | 1 | SLUG PAN | STL |
| C2526 | 39 | 1 | IDLE SHAF GUARD | |
| | 38 | 1 | 5/16-18 X .75 LG BUTTON HSCS | STL |
| | 37 | 16 | #10-24 ELASTEC LOCK NUT | STL |
| | 36 | 16 | #10 SAE FLAT WASHER | STL |
| | 35 | 7 | 5/16-18 ELASTIC LOCK NUT | STL |
| | 34 | 3 | 5/16 SAE LOCK WASHER | STL |
| | 33 | 16 | 5/16 SAE FLAT WASHER | STL |
| | 32 | 2 | 1/4-20 X .38LG SHSS | STL |
| | 31 | 9 | 5/16-18 X .75LG SHCS | STL |
| | 30 | 7 | 5/16-18 X 1.00LG SHCS | STL |
| | 29 | 8 | #10-24 X .38LG SHCS | STL |
| | 28 | 6 | #10-24 X .50LG SHCS | STL |
| | 27 | 2 | #10-24 X .75LG SHCS | STL |
| | 26 | 20 | #10-24 X 1.00LG SHCS | STL |
| | 25 | 1 | BERG TIMMING BELT 1/5 PITCH (XL) .200 CIRC. PITCH 75 GROOVES | MAT'L |
| | 24 | 1 | REDUCER/MOTOR | MAT'L |
| | | | | |
| 6202112 | 23 | 2 | FENNER MAT'L | |
| | | | | |
| TP20A8W6-24 | 22 | 2 | BERG TIMMING PULLY 1/5 PITCH (XL) .200 CIRC. PITCH 24 GROOVES .500 DIA. BORE | PURCH |
| EP161816 | 21 | 1 | BUNTING POWDERED METAL BEARING 1.00 ID X 1.125 OD X 1.000 LG | PURCH |
| INA-585 | 20 | 4 | REID THRUST WASHER .032 THICK INA-585 | PURCH |
| INA-525 (TC1625) | 19 | 2 | REID TOOL INA CYLINDRICAL ROLLER THRUST BEARING INA-525 | PURCH |
| | 0 | 0 | | |
| C2514 | 17 | 1 | GUARD | STEEL |
| A2517 | 16 | 1 | TUBE SCRAPPER | DUREON |
| A2510 | 15 | 1 | SHAFT CAP | HRS M1020 |
| A2516 | 14 | 1 | 1/4 PRESSURE BLOCK | DUREON |
| A2511 | 13 | 1 | 1/4 PRESSURE BLOCK | DUREON |
| A2511 | 12 | 1 | 1/4 PRESSURE BLOCK | DUREON |
| A2513 | 11 | 1 | PULLY WHEEL SCRAPPER | URETHANE |
| A2507 | 10 | 1 | SCRAPPER MOUNTING ANGLE | ALUM ANGLE |
| A2515 | 9 | 2 | SCRAPPER MOUNTING ANGLE | ALUM ANGLE |
| B2501 | 8 | 2 | 1/4 PULLY | DUREON |
| B2502 | 7 | 2 | 1/4 GUIDE | DUREON |
| B2503 | 6 | 1 | DRIVE SHAFT | TG & P |
| B2504 | 5 | 1 | IDLE SHAFT | TG & P |
| B2505 | 4 | 1 | IDLE SHAFT SUPPORT | CFS1018 |
| C2506/AB | 3 | 1 | MOUNTING ANGLE | CFS1018 |
| | 0 | 0 | | |
| D2509 | 1 | 1 | MOUNTING PLATE | CFS1018 |

| DRAWING No. | ITEM | AMT | STOCK SIZE OR DESCRIPTION | MATERIAL |
|-------------------|--------------|-----|---------------------------|----------|
| SIGNATURES | | | | |
| DRAWN Ken Kaschak | | NO | DAY | YR |
| CHECKED NC | | 08 | 28 | 03 |
| TYPE OF PRESH | | | | |
| ASA | ASSEMBLY | | | |
| DESIGN | DESIGN | | | |
| CONSTRUCTION | CONSTRUCTION | | | |
| INSPECTION | INSPECTION | | | |
| TESTING | TESTING | | | |
| FINISHING | FINISHING | | | |
| PACKAGING | PACKAGING | | | |
| REWORK | REWORK | | | |
| REVISIONS | REVISIONS | | | |
| OTHER | OTHER | | | |

SKIMTECH

THE SKIMTECH CORPORATION BOARDMAN, OHIO U.S.A.

1/3 EXPLOSION PROOF

MATERIAL FAB STEEL

SIZE D XXXX

SCALE - HALF

SHEET